

# MDS Balance Powder NFF

The optimum way to handle regrind

Expensive powder additives often add high impact to processes, so obtaining the best in accuracy and reliability is a must. The MDS Balance Powder accurately doses powders including non-free-flowing materials from 0.1-40kg/h.

Double spiral and hopper agitation ensure trouble free dosing of the most difficult powders. The MDS Balance Powder is suited to both injection moulding and extrusion applications. The MDS Balance Powder operates as a single unit, or integrated into a unique modular continuous blending system. This allows the addition of difficult powders to the blend of your extruder.

## Features

- ▶ Double spiral design for reliable dosing of non-free-flowing powders
- ▶ Agitator avoiding material clogging or rat holing
- ▶ High grade polished hopper
- ▶ Quick release coupling for easy cleaning
- ▶ Special support frame for hopper loaders available



## Extremely Accurate and Robust

The double spiral design, stepper motor control and patented gravimetric technology create extreme accuracy. The unit is made to last in the most troublesome environments.

## User Friendly

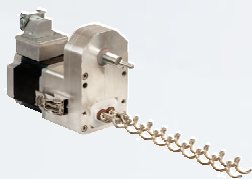
An 8" full colour touch screen display with integrated hopper loader control ensures easy operation. The MCLan software allows 100% traceability of the dosed additives.

## Modular

The MDS Balance Powder can be integrated in our unique continuous blending systems.

## MDS Balance Powder - Gravimetric or Volumetric

The MDS Balance Powder is available in a gravimetric or volumetric version. The volumetric dosing unit comes with an MC18 controller.



# GET IN TOUCH TODAY

We solve the most technically advanced plastics automation problems across all industries.



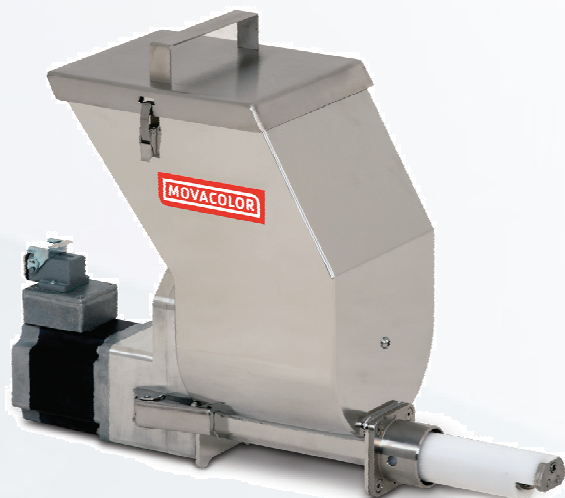
+44 (0) 1827 265 800

info@summitsystems.co.uk

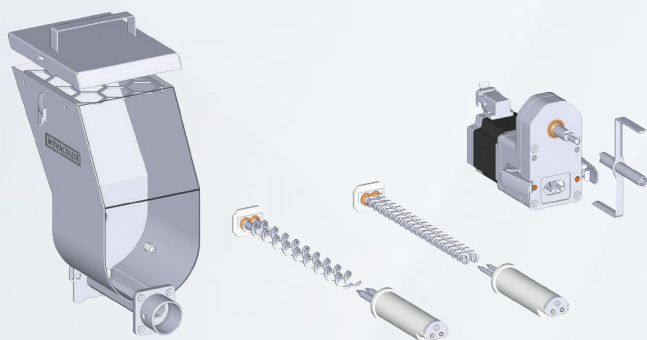
www.summitsystems.co.uk

# MDS Balance Powder NFF

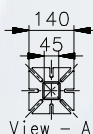
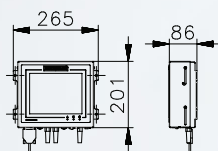
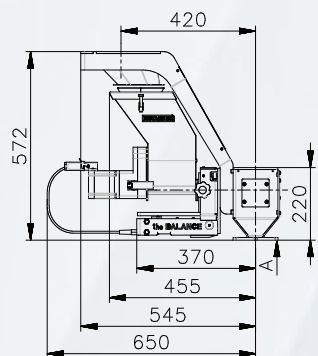
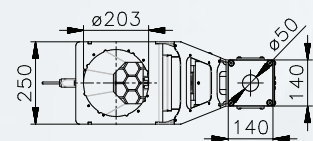
## The optimum way to handle regrind



### Exploded view dosing spiral options



### Dimensions



### Technical Specifications

#### Capacity

- 0.1 - 40kg/h\*

#### Applications

- Injection Moulding and Extrusion

#### Communication

- Modbus TCP/IP, Profibus\*\*, Profinet\*\*

#### Data Storage

- Internal memory (static changes), MCLan data logging software (dynamic changes), 500 recipes storage function

#### Power Supply

- 95-250 VAC, 50/60 Hz. By integrated automatic voltage selector

#### Power Consumption

- 150 Watt maximum

#### Languages

- English, German, Dutch, French, Hebrew, Turkish, Chinese, Thai, Japanese, Russian, Italian, Czech, Portuguese, Spanish, Indonesian, Polish, Korean, Hungarian, Swedish, Romanian\*\*\*

#### Operation

- 8" full colour touch screen display

#### Input Signals

- Start input: potential free, 24 VDC or extruder tach (0-30 VDC)

#### Power Consumption

- 300 Watt maximum

#### Output Signals

- Alarm, warning, valve (for hopper loader control), 2x0-10 VDC\*\* or 4-20 mA\*\*

\* measured with powder with a bulk density of 0.6 kg/dm<sup>3</sup>

\*\* optional

\*\*\* additional languages on request

# GET IN TOUCH TODAY

We solve the most technically advanced plastics automation problems across all industries.

Summit Systems assumes no responsibility for any errors or inaccuracies in this literature and reserves the right to make changes without prior notice.



+44 (0) 1827 265 800

info@summitsystems.co.uk

www.summitsystems.co.uk

Summit Systems Ltd est. in 1989. Registered in England 2489937 - VAT no. GB 549 5321 27

April 2023