

# Gravimetric Blenders

## 100 Series

The Maguire Weigh Scale Blender™ (WSB) range of gravimetric batch blenders are for all plastics converting businesses, extrusion, injection and blow moulding applications.

Model	WSB 140	WSB 140R	WSB 160
Hoppers	1	1	1
Material Compartments	4	2	6
Remoble Hoppers	-	2	-

### Features and Benefits

- ▶ Ideal for small processing machines
- ▶ Reduced weight and footprint
- ▶ Overall precision of  $\pm 0.1\%$  of specified blend
- ▶ Compressed air gun for quick cleanout included
- ▶ Easy access to all material contact surfaces of the machine including hoppers, weigh bin, and mixing chamber permits rapid colour change without the use of tools
- ▶ Proprietary microprocessor-control technology monitors and confirms the weight of each ingredient/touch-screen optional
- ▶ Compensation is made when a variation in dispense weight is detected
- ▶ Vibration weighing management
- ▶ Improved documentation capabilities
- ▶ 5 year warranty

### Operation

- ▶ Material dosed at 1-100% by stainless steel slide gate
- ▶ Slide Gate Restrictor (SGR-1) recommended on 1-4% dosing
- ▶ Default hopper size = 1000g batch size
- ▶ System tares weigh bin, then dispenses in sequence e.g. regrind, natural, colour and additive, weighing after each dispense
- ▶ Batch released to mixing chamber and mixed, with previous batch
- ▶ Sensor in mix chamber becomes covered, blender waits
- ▶ Material consumed, sensor uncovered, next batch cycle commences
- ▶ WSB 140R removable hopper uses a pivot valve for dosing

### Control

- ▶ 124 standard features and functions
- ▶ Alarm and strobe light with silence function, to alert to incomplete batch
- ▶ Continuous material calibration for accurate blend
- ▶ Controller updates flow rate every dispense for accuracy
- ▶ User friendly settings entry via thumbwheels or keypad
- ▶ Password protected keypad for security
- ▶ Setup and operation reports print direct to USB key
- ▶ Remote access and monitoring
- ▶ Integrates to other control or ERP systems



+44 (0) 1827 265 800

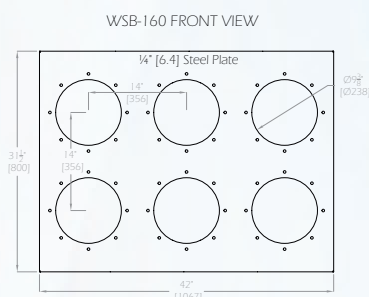
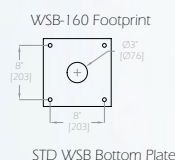
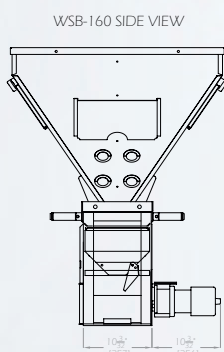
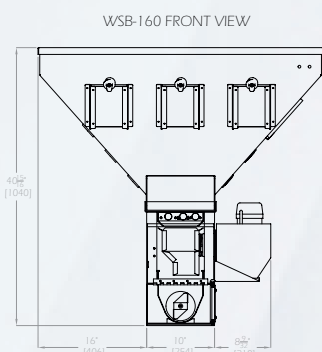
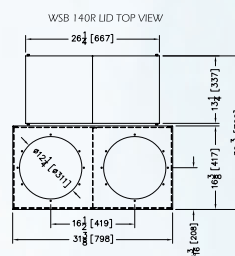
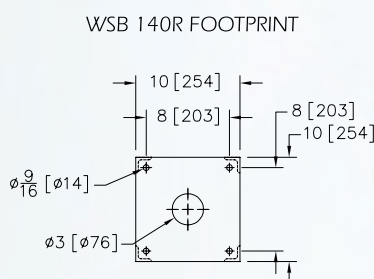
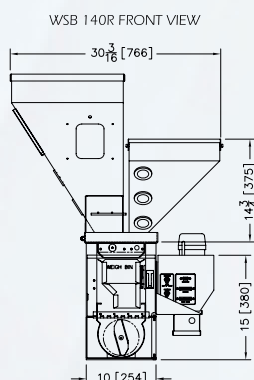
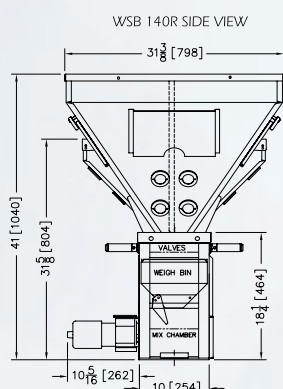
info@summitsystems.co.uk

www.summitsystems.co.uk

# Gravimetric Blenders

## 100 Series

Technical Data	WSB 140	WSB 140R	WSB 160
Maximum Throughput** (kg/h)	160 to 210	150 to 205	140 to 190
** Throughput achieved is influenced by number of materials, how well they flow, vibration and loading consistency - each can effect maximum output of a blender, which in turn effects sizing the correct blender required for an application.			
Number of Materials	4	4	6
Material Dispense Systems (mm)	2 - 38 x 76 Slide Gate 2 - 38 x 38 Slide Gate	2 - 38 x 76 Slide Gate 2 - 25 Pivot Valve	2 - 38 x 50 Slide Gate 2 - 38 x 38 Slide Gate
Weight (kg)	68	86	86
Power Supply (A)	230vac - 2.5		
Operating Air Pressure (bar)	4-6		
Air Consumption (m3/h)	0.3		
Shipping Weight (kg)	102	102	125
Height x Width x Depth (mm)	1220 x 850 x 850	1220 x 850 x 850	1220 x 1100 x 850



## GET IN TOUCH TODAY

**We solve the most technically advanced plastics automation problems across all industries.**



**+44 (0) 1827 265 800**

 [info@summitsystems.co.uk](mailto:info@summitsystems.co.uk)

 [www.summitsystems.co.uk](http://www.summitsystems.co.uk)