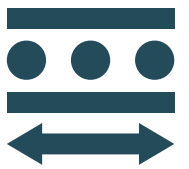


# Summit Systems: Leaders in plastics ancillary equipment & services



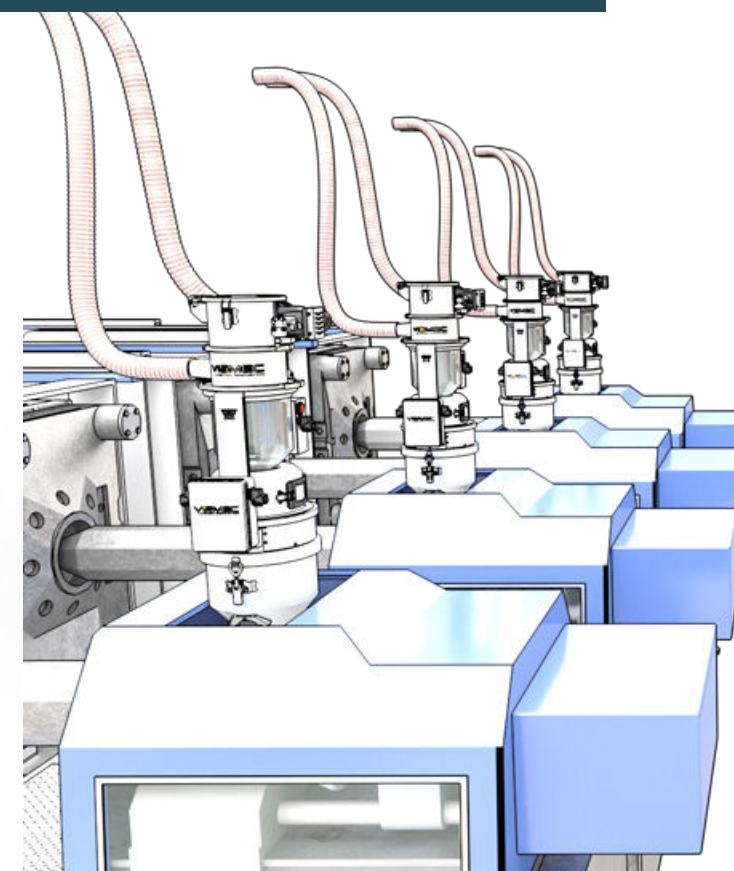
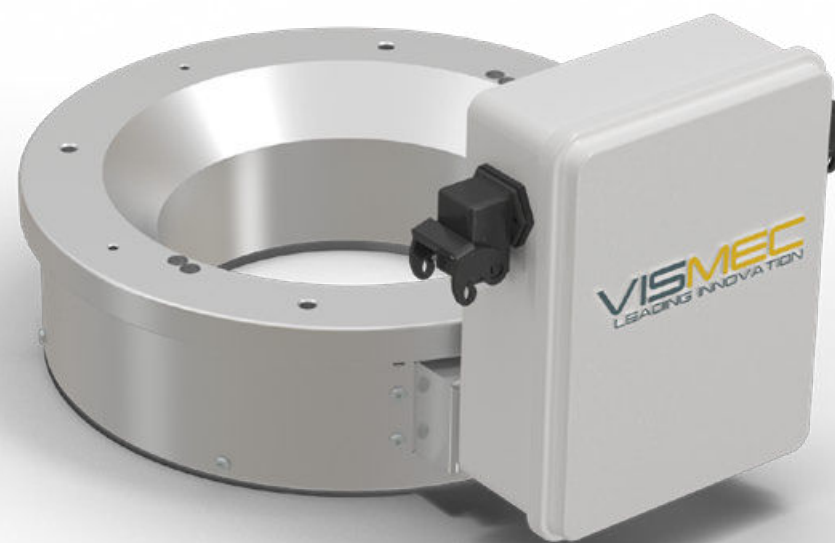
HALO



# HALO

The HALO is a weighing device installed below a material receiver or loader to determine and monitor the material throughput in real time.

It allows you to get accurate control of your plastic production main cost: your raw material.



## HALO FUNCTIONS

### MEASUREMENT IN REAL TIME

The Halo is able to measure accurately in real time the material throughput in kg/h.

### AUTOMATIC ADJUSTMENT

The dryer and the drying parameters are controlled by the HALO, adapting automatically to the production process in real time.

### MAXIMUM PRODUCTION

You can set an alarm for exceeding the maximum throughput avoiding conveying of eventual undried material to the production machine.

### CONVEYING BY WEIGHT

The HALO is world wide the only product, which control a conveying system by weight and not time as normally: the convey time and line cleaning time is defined automatically by the HALO.

### BATCH

The operator can set a material quantity he wants to produce and the HALO counts the accumulated weight, indicates the missing time and stops the loading when the batch weight has been reached.

### DATA STORAGE

The Halo is able to detect and show the hourly production in kg/h and the precise quantity of material already used. It can calculate and memorize all the material loaded by the receiver to be recalled for data analysis at any time, whether hourly, daily, monthly or a selected period of time. It counts the quantity of material conveyed in terms of kg.

The accumulated data of material consumptions will be available in different formats and also through open communication to integrate the data into other systems.

## HALO conveying

Beside the standard benefits of the HALO:

- real time throughput indication with alarm function
- material consumption: actual and historical
- batch production with remaining time and automatic production stop.

The VISMEC HALO offers a world wide unique function of controlling the conveying system by weight.

This means no more hassle with adjusting conveying times according the material, the distance, the weight, ...

imagine you convey material from a storage room 50 m away and then switch to a material coming from next the machine: you need to adjust all timing of your receiver.

Not with the HALO! your receiver can for example keep 10 kg of material?

this is what you set and our central VisiBus control finds the corrects convey and line cleaning times by itself.



The HALO in combination with a Vismec dryer again offers the possibility to:

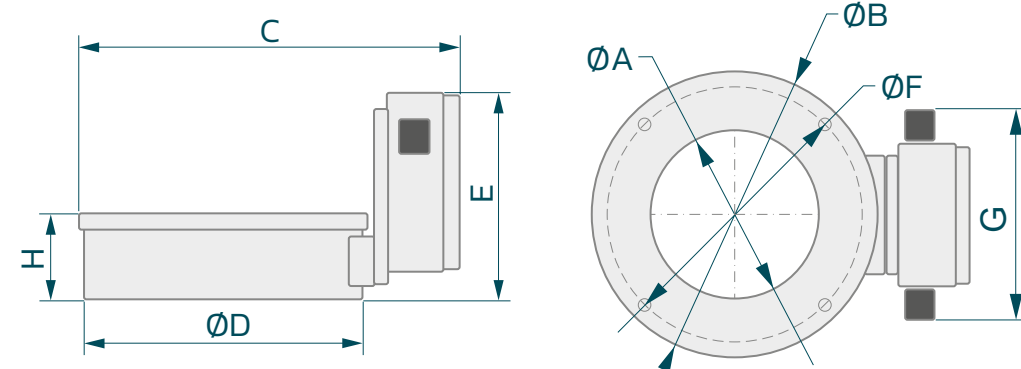
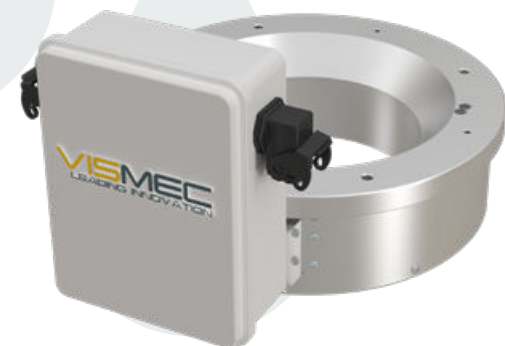
- monitor the material consumption
- to produce a batch of a setable value before stopping the dryer automatically

The real time throughput in kg/h is determining the drying parameters automatically of the dryer.

## HALO drying







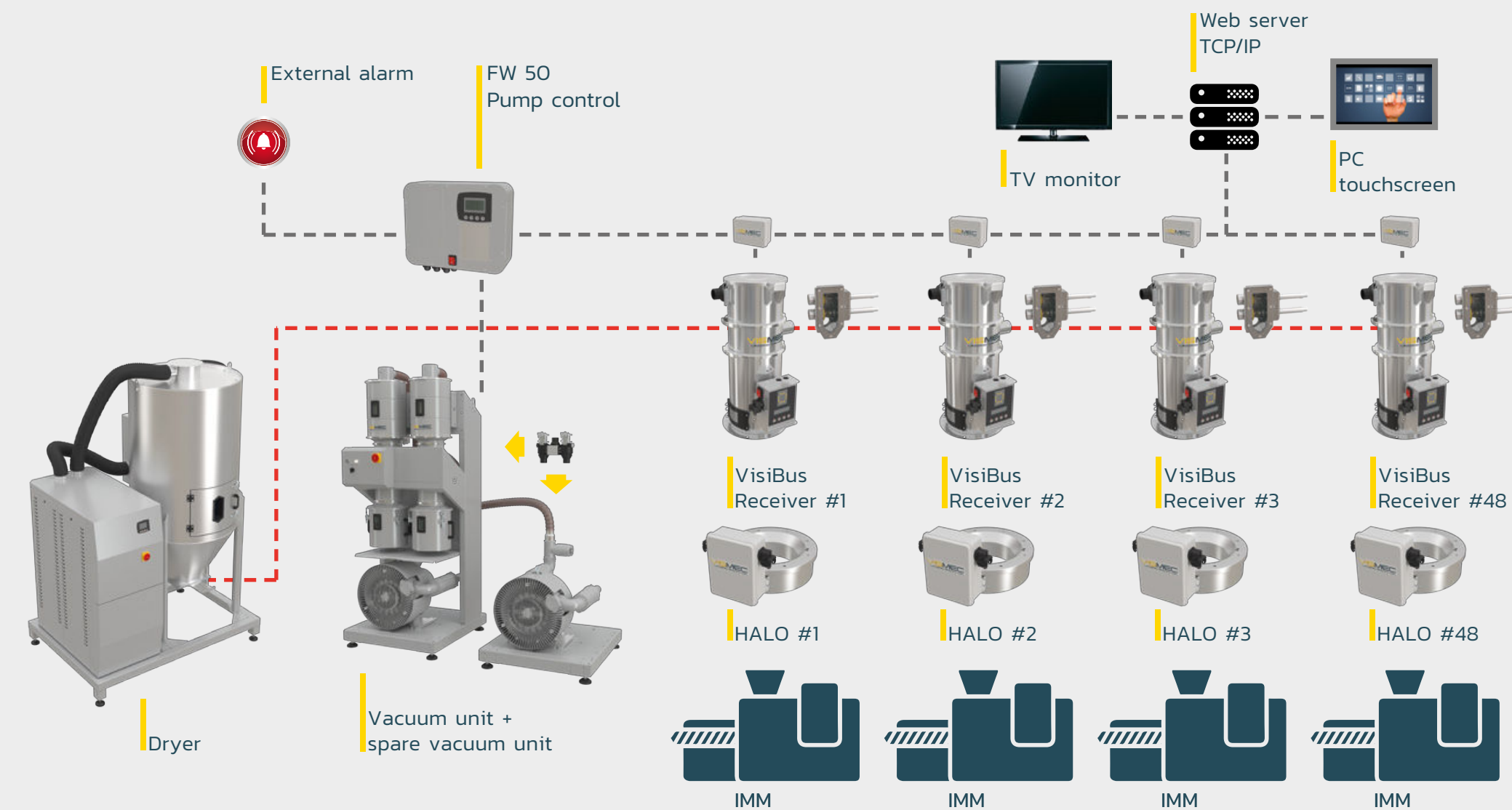
## DIMENSIONAL TABLE

CODE	A mm	B mm	C mm	D mm	E mm	F mm	G mm	H mm
03952	189	324	420	304	232	280	237	95

## TECHNICAL FEATURES

CODE	WEIGHT	POWER	COMMUNICATION MODBUS RTU INTERFACE	SUITABLE RECEIVERS	MATERIAL MAX TEMP.
03952	15 kg	24 Vdc 100 mA	RJ45 R s485	From 2 to 50 liters	80° C

## HALO with VISIBUS system



contact us for other products:



drying



dosing



grinding



storage

Summit Systems Ltd  
Vanguard, Tame Park,  
Tamworth, Staffs B775DY

+44 (0)1827 265800  
[www.summitsystems.co.uk](http://www.summitsystems.co.uk)